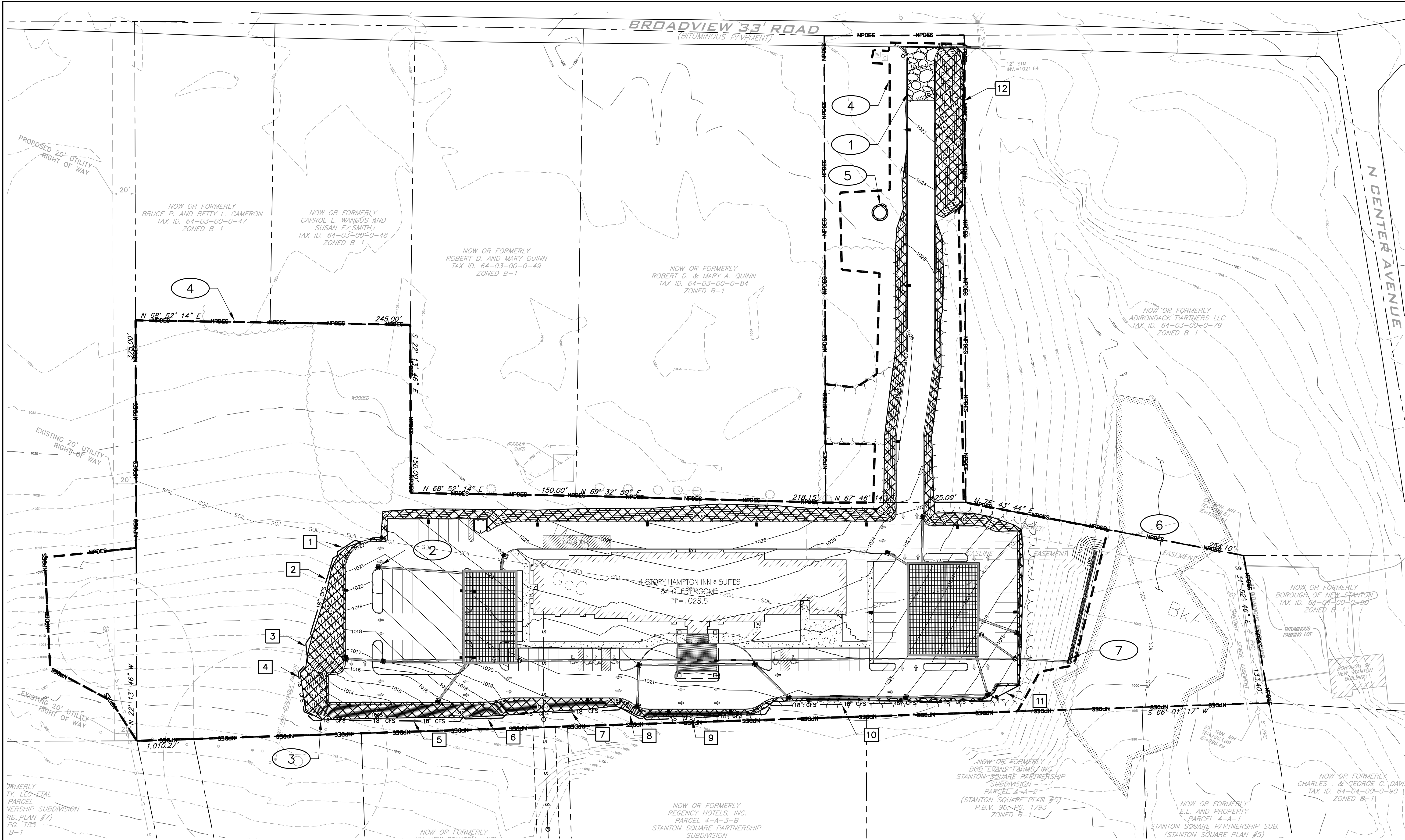


Rs:1511 - Plan - New Stanton Hotel030_Design (DWG)1511 - Plan-New Stanton - Base.dwg, Plotted: Jul 12, 2016 - 10:22am



EROSION AND SEDIMENT CONTROL NOTES

- 1 PROPOSED ROCK CONSTRUCTION ENTRANCE. SEE $\frac{2}{C6.3}$
- 2 PROPOSED INLET PROTECTION. SEE $\frac{3}{C6.3}$
- 3 PROPOSED COMPOST FILTER SOCK. SEE $\frac{1}{C6.3}$
- 4 PROPOSED LIMIT OF CONSTRUCTION.
- 5 PROPOSED CONCRETE WASHOUT AREA. SEE $\frac{4}{C6.3}$
- 6 EXISTING WETLANDS
- 7 PROPOSED GRAVEL-FILLED LEVEL SPREADER.

LEGEND

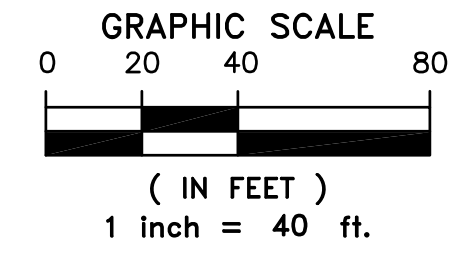
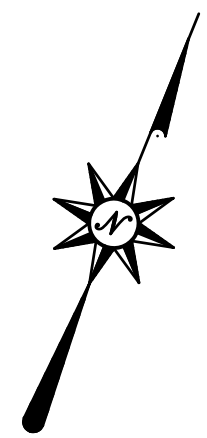
- PROPOSED ROCK CONSTRUCTION ENTRANCE.
- PROPOSED LIMIT OF CONSTRUCTION.
- PROPOSED COMPOST FILTER SOCK.
- PROPOSED INLET PROTECTION.
- PROPOSED EROSION CONTROL BLANKET.
- EXISTING MINOR/MAJOR CONTOURS.
- PROPOSED MINOR/MAJOR CONTOURS.
- EXISTING DRAINAGE SWALE

COMPOST FILTER SOCK SIZING

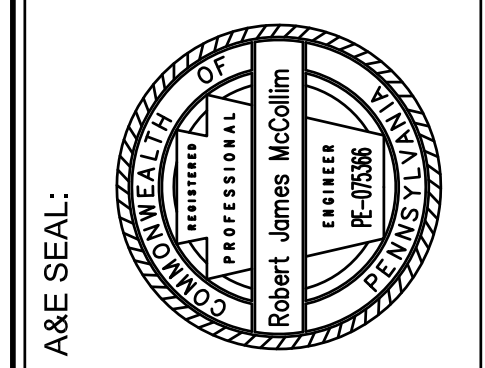
SOCK NUMBER:	SOCK SIZE (IN):
1	18
2	18
3	18
4	18
5	18
6	18
7	18
8	18
9	18
10	18
11	18
12	18



Know what's below.
Call before you dig.



CALL BEFORE YOU DIG!
PENNSYLVANIA LAW REQUIRES
3 WORKING DAYS NOTICE FOR
CONSTRUCTION PHASE AND 10 WORKING
DAYS NOTICE IN DESIGN STAGE.
STOP CALL
PENNSYLVANIA ONE CALL SYSTEM, INC.
1-800-242-1776



ACKNOWLEDGEMENT OR "SIGN-OFF" BY
PARTIES TO THE CONSTRUCTION
DRAWING IS REQUIRED FOR ANY
ALTERATION OF LEASE TERMS.
THE INFORMATION CONTAINED IN THIS
SET OF DOCUMENTS IS PROPRIETARY
BY NATURE. ANY USE OR DISCLOSURE
OTHER THAN THAT WHICH RELATES TO
THE PROJECT FOR WHICH IT WAS
PREPARED, WITHOUT THE WRITTEN
CONSENT OF THE ENGINEER, CONSTITUTE
IT A VIOLATION OF LAW FOR ANY
PERSON, UNLESS THEY ARE WORKING
UNDER THE DIRECTION OF A LICENSED
PROFESSIONAL ENGINEER, TO ALTER
THIS DOCUMENT.

HAMPTON INN & SUITES
BAIR BOULEVARD
NEW STANTON, PA 15672
WESTMORELAND COUNTY, PENNSYLVANIA

REVISIONS:	MARK	DATE	REVISOR	DESCRIPTION
1		7/11/2016		

PROJ NO: 1511
SCALE: AS SHOWN
DATE: 5/18/2016
DESIGNED BY: RJM
DRAWN BY: MJN
CHECKED BY: CKM

SHEET TITLE:
**EROSION AND
SEDIMENTATION
CONTROL PLAN**
SHEET NO.
C6.1